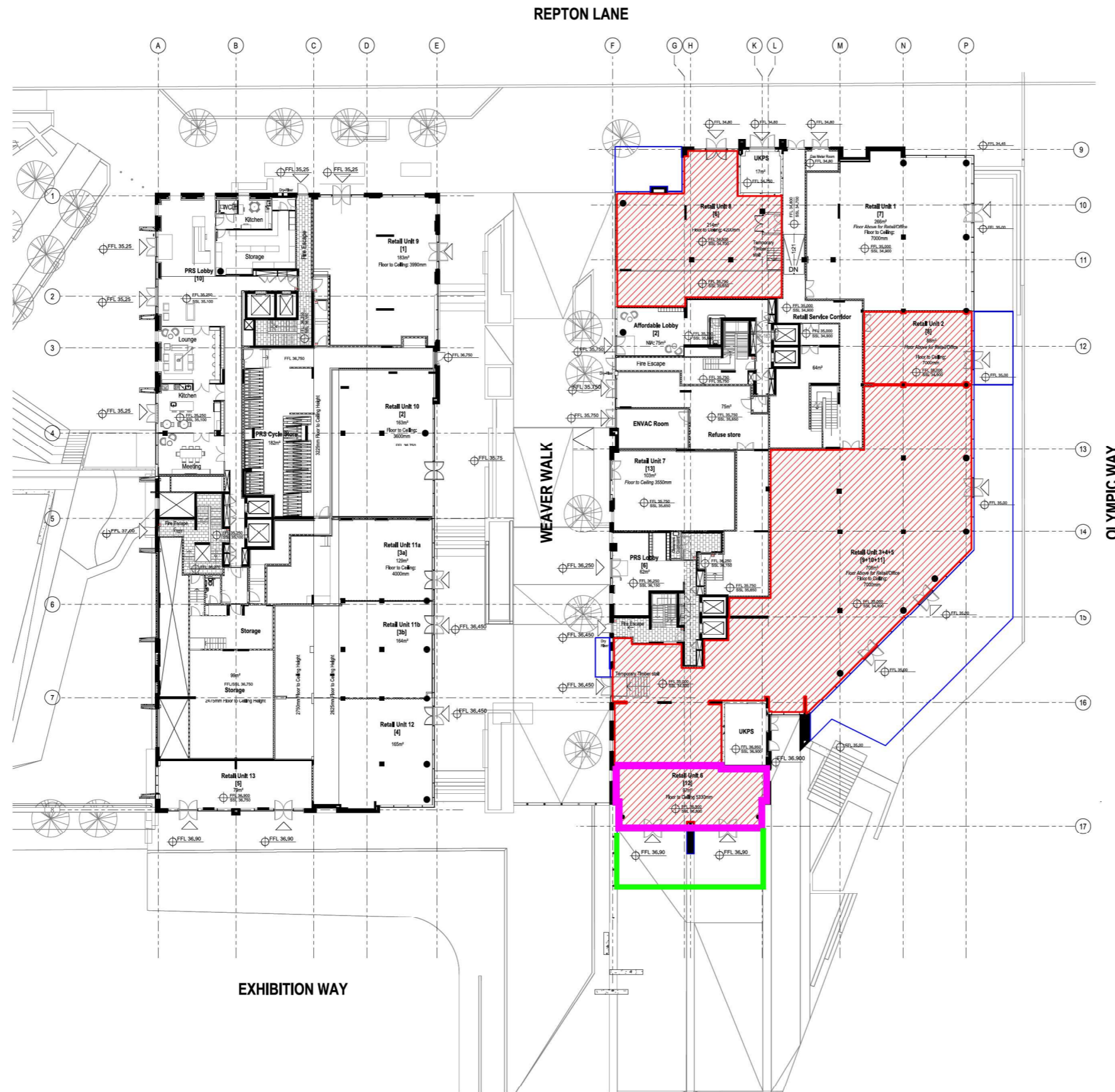


Retail Unit 6 (construction Unit 12), NW08



| Drawing Record | | | | |
|----------------|------------|----|-------------|---------|
| Rev | Date | By | Comments | Checked |
| PD1 | 08.01.2019 | AV | FIRST ISSUE | LP |

KEY:
 ALCOHOL LICENSED UNITS
 EXTERNAL LICENSED AREAS



SIGNIFICANT HEALTH AND SAFETY RISKS (UNUSUAL AND DIFFICULT TO MANAGE ONLY)
 It is assumed that all works will be carried out by a competent contractor working, where appropriate, to an approved method statement. In addition to the hazards/risks normally associated with the types of work detailed on this drawing, note the following:

PRELIMINARY

Client
 QUINTAIN ESTATES

Consultants

leslie jones architecture
 Scale 3.02 Grand Union Studios Telephone 020 7255 1150
 332 Ladbrooke Grove E-mail admin@leslie-jones.co.uk
 London W10 5AD

Job Title
 WEMBLEY RETAIL CURATION

Drawing Title
 WEMBLEY
 NW08
 ALCOHOL LICENSED AREAS

| Scale @ A3 | Date | Drawn | Checked |
|------------|-------------|-----------------|---------|
| 1:500 | JAN 2019 | AV | LP |
| Job No. | Drawing No. | Revision | |
| 3 6 7 4 | AT(0,3) | 0 8 8 0 0 P 0 1 | |

